

ADVANCED MISSION MAPPING & VIDEO MANAGEMENT

TrakkaMaps TM-100 mission mapping and video management system perfectly complements Trakka's suite of advanced camera and searchlight systems for an unparalleled integrated Total Mission Solution.

FULL FEATURED MAPPING

- Augmented Reality (AR) overlays on live video imagery display important geographic information like roads, boundaries, and Points of Interest for safer and more effective missions
- 3D, Street, Satellite and Custom Map Views
- Video (with Metadata) and audio recording

FLEXIBLE ARCHITECTURE, EASILY CUSTOMISED

- Fully integrated with Open Source databases
- Easy integration by users with proprietary secure databases
- Easily interfaced to networked info sources such as vehicle tracking systems, parcel data etc

INNOVATIVE POST-PROCESSING CAPABILITY

- Unique post-processing capability for analysis & highly efficient reporting
- Real-time mapping capability to match other competitors

INTUITIVE USER CONTROL, & MAX SITUATIONAL AWARENESS

- Simple touch-screen controls (runs on tablets or notebooks)
- Full camera and searchlight functionality from mapping system
- Easy single-click operation to meet diverse mission challenges (toggle map layers, move viewpoint, point the camera at a known position etc)

KEY BENEFITS

- Low-Cost, Full-Featured Mapping Solution
- Plug & Play integration with other Trakka products
- Runs on a variety of computer platforms, including notebooks and ruggedized laptops
- Provides tools for mission planning and post-mission playback, analysis, and reporting
- Augmented Reality (AI) map overlays on live video for enhanced situational awareness and accuracy
- Slaves camera and searchlight to anywhere on the map for reduced sensor operator workload
- Controls the gimbal and sensors for simplified operation and increased safety
- Provides easy integration to downlinks via embedded H.264 video streaming over Ethernet (MISB 0601.7 Compliant)
- Exploit details from primary and secondary sensors simultaneously via map, video, split-screen, picture-in-picture, and image blending modes



TM-100

MAPPING SYSTEM SPECIFICATIONS

| | |
|------------------------------|---|
| Views | <ul style="list-style-type: none"> Street overlay (Augmented Reality) Map only Split-screen Picture-In-Picture Map/sensor blending Points-of-interest overlay Reverse Geo-Coding (view address of where the sensor is looking) Virtual Camera view (synthetic vision) |
| Displayed Information | <ul style="list-style-type: none"> Sensor Pan/Tilt symbology Compass rose Date and time Aircraft/sensor boresight position, altitude Pin positions, altitude, distance Aircraft/sensor position breadcrumbs Aircraft icon on map Sensor FOV footprint on map Dropped pins on map |
| Search | <ul style="list-style-type: none"> Address look-up (search for location by address) Free-Text search Intersection search City Name, Coordinates (DMS, DDEG formats) |
| Control | <ul style="list-style-type: none"> Geo-point (slew sensor to address, free-text, intersection, city name or coordinates) Slew-to-Pin (touch pin to geo-point sensor) Searchlight full control (when installed); slave mode with the sensor or a waypoint |
| Recording | <ul style="list-style-type: none"> Video Audio Metadata |

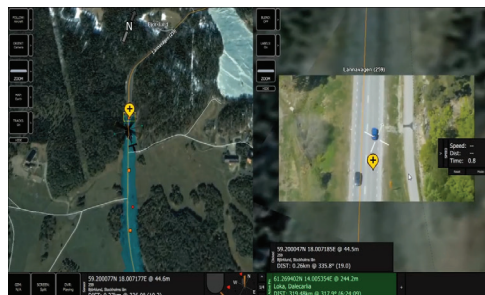
SOFTWARE SPECIFICATIONS

| | |
|--------------------------|--|
| Recording | MISB0601 - Compliant |
| Street Maps | Included, Continent-Wide |
| Satellite | Included, Detail Varies by Locale |
| Elevation | Included, Continent-Wide |
| Map | 3D with multiple follow modes |
| Augmented Reality | With Digital Zoom, Pan, Tilt |
| Screens | Split, PiP, Map-Only, Video-Only |
| Ops System | Windows |
| Options | Customizable to meet customers' requirements |



FEATURES

- 3D Map View, Street Maps and Satellite Views Intuitive Touch-Screen Controls
- Digital Video Recorder with Metadata and Integrated Audio Recording
- Point by Click, Address, Intersection or Lat/Long/Alt
- Easy Integration of User Maps and GIS Data
- Displays Aircraft & Sensor Breadcrumbs
- Paints Sensor FOV Coverage Polygons
- Ground-Track Speed Estimation Modes
- Supplied with Continent-Wide Base Data



Trakka Corp Pty Ltd
23 Kilpa Road, Moorabbin
Victoria 3189 Australia
Phone: +61 3 9553 3000

Trakka Systems AB
Stationsvägen 46
640 43 Ärla Sweden
Phone: +46 16 708 60

Trakka USA LLC
4725 Lena Road, Unit 103
Bradenton Florida 34211, USA
Phone: +1 941 500-5158

trakkasystems.com
info@trakkasystems.com

