

# TrakkaBeam® TLX



## **TRAKKA'S LATEST GENERATION SEARCHLIGHTS ARE IN A CLASS OF THEIR OWN**

Utilizing a unique Xenon technology, our systems provide a more intense and stable beam with half the power consumption of previous systems. Capable of full brightness in one-second flat, our TrakkaBeam® products keep your missions from ever being in the dark.

### **HIGHER INTENSITY**

The custom-built optics of the TLX provide an efficient and even beam, from the center to the edges, with 25% greater intensity and volume of light across the beam than previous TrakkaBeam® searchlights.

### **REAL TIME FILTER SELECTION**

Up to six different filters can be selected in less than 1 second. Filter combinations can be configured to your requirements and include Covert IR illumination (for assets with NVG), and visible red, green or amber and white light options.

### **ENHANCED POWER AND OPERATIONAL EFFICIENCY**

The TLX draws 10% less power to run the lamp from previous systems, due to an enhanced power management system. Additionally, the weight of the Power Control Unit has been reduced by 22% from previous TrakkaBeams through an improved heat management system, that ensures cooler operation in all environments.

### **MISSION INTEGRATION WITH UNPARALLELED ACCURACY**

Trakka Systems has taken searchlight technology to the next level with embedded absolute encoders and provides an increased operational envelope, instant position recognition, and faster more responsive movement of the searchlight.



## **DO-160G TESTED AND QUALIFIED FOR PERFORMANCE AND RELIABILITY**

The TLX has been rigorously tested to DO-160G standards by internationally recognized laboratories and ensures trouble-free and reliable searchlight performance for your missions.

## **SYSTEM INTEROPERABILITY**

The TLX series is compatible in form, fit and function to most A800 models for backwards compatibility with aircraft wiring and mounts, allowing for an easy upgrade path where required.

## **KEY FEATURES**

- 25% higher intensity and volume of light across the beam than previous systems
- Covert IR illumination (for assets with NVG)
- Up to 6 different real-time filters including white light
- Inertially stabilized for enhanced performance and ease of use
- DO-160G certified & DO-178 compliant
- System interoperability with most A800 models (backwards compatible for easy upgrade path)
- Instant position recognition and faster, more responsive movement

# TLX

## PERFORMANCE SPECIFICATIONS

Watts	800
Lumens total	22,500
Beam Width (focus)	5°-14°
Diameter @ 3300f	311ft (95m), 40% of peak illuminance
Recycle Time	Not Required
Gimbal Control	2 Axis remote
Rotation	Azimuth: +190°/-190° (non-continuous) Elevation: +35°/-175°
Slew Rate Variable	Azimuth: 0-60° per second Elevation: 0-60° per second
Serial Communication	RS232 and RS422
Camera Slaving	Forward and reverse slaving

## MECHANICAL SPECIFICATIONS

### SEARCHLIGHT ASSEMBLY

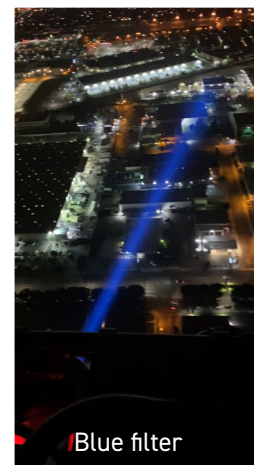
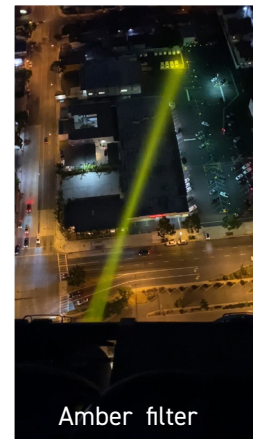
Envelope Size (min)	Height: 18.98" (482mm) Width: 17.52" (445mm)
Envelope Size (max)	Height: 23.39" (594mm) Width: 17.52" (445mm)
Weight (searchlight/gimbal)	39.38lbs (17.9kg)
Total System Weight	49.74lbs (22.61kg) Including S/L, PCIU, Filters & Grip
POWER SUPPLY (WIRING JUNCTION)	
Size	5.83(H) x 5.51(W) x 13.39(L)"   148(H) x 140(W) x 340(L) mm
Weight	9.46lbs (4.3kg)

## ELECTRICAL SPECIFICATIONS

Input Range	22 - 32 VDC
Input Current	35 - 40 amps
Starting Time	1 second

## OPTIONS

- NVG compliant pilot/co-pilot control panel
- Amber, Near Red, Blue, Green, and 825nm, 875nm & 950nm IR filters
- Integrated slaving for TRAKKA, FLIR, WESCAM, SWE, LEO & CINEFLEX cameras
- NVG compliant backlit grip control
- Dual grip control with priority switching
- Laser pointer (option)
- Customised installation cable kits



**Trakka Corp Pty Ltd**  
23 Kilpa Road, Moorabbin  
Victoria 3189 Australia  
Phone: +61 3 9553 3000

**Trakka Systems AB**  
Stationsvägen 46  
640 43 Ärla Sweden  
Phone: +46 16 708 60

**Trakka USA LLC**  
4725 Lena Road, Unit 103  
Bradenton Florida 34211, USA  
Phone: +1 941 500-5158

[trakkasystems.com](http://trakkasystems.com)  
[info@trakkasystems.com](mailto:info@trakkasystems.com)

